



LAWRENCE COUNTY
ECONOMIC DEVELOPMENT CORPORATION

... on the JOB

Update for members & strategic partners

Opportunity is missed by most people because it is dressed in overalls and looks like work.

Thomas Edison

Contents...

- **2009 Annual Dinner - A Resounding Success**
- **Upcoming Greenhouse Emissions Workshop**
- **Upcoming Growth Partnership Meeting**
- **LCEDC Corporate Office Condominium for sale or lease**
- **Building PA Fund available to finance projects in New Castle and Ellwood City**
- **SBA Funding Workshop**
- **New PA Select Sites database**
- **Membership Listing**

LCEDC 2009 Annual Dinner - A resounding success

On September 30, 2009 a captive audience listened intently to Dennis Yablonsky and Bill Flanagan of the Allegheny Conference on Community Development regarding the transformation of Pittsburgh. For nearly an hour, the 199 attendees of the Lawrence County Economic Development Corporation's 7th Annual Dinner learned how Pittsburgh, over a 30 year timeframe, transformed itself into a global model for economic, environmental and quality-of-life success.

The three keys that they listed for their success are:

1. ***Pittsburgh builds upon its historic strengths as a hub for manufacturing, finance, business services and energy.***

A. Advanced Manufacturing - Pittsburgh manufacturers employ almost 100,000 workers



(Annual Dinner - cont'd.)

And the region is the second-largest market in the US for metals industry employment.

- b. **Financial and Business Services** - Pittsburgh remains a leading financial center, with major institutions including BNY Mellon, Citizens Bank, Federated Investor, Highmark and PNC headquartered or basin major business units there.
 - c. **Energy** - With a legacy of leadership in energy innovation dating back to the first commercial nuclear power plant, Pittsburgh provides an unparalleled mix of natural resource, research and industry engaged in the development, production and distribution of sustainable energy solutions.
 - d. **Global Business** - More than 100 billion-dollar-plus global companies are either headquartered or base a major business unit in the Pittsburgh region
2. ***Pittsburgh leverages human capital to create new industries based on research, innovation and entrepreneurship.***
- a. **Health Care and Life Sciences** - Pittsburgh's health services sector has almost tripled in size since 1979.
 - b. **Education and Research** - With two Tier-One research institutions - Carnegie Mellon University and the University of Pittsburgh - among our region's 35 colleges and universities, with 100 corporate research and development centers, Pittsburgh has more than 70,000 workers engaged in research and development.
 - c. **Information and Communications Technology** - The Pittsburgh region is home to about 1,600 technology firms including Ansys, Apple, Black Box, Google, Intel, and Mastech, employing 32,000 people. These companies benefit from a tech-savvy talent pipeline and the support of organizations that nurture the region's growing knowledge-based economy.
3. ***Pittsburgh capitalized on its natural and cultural assets to invest in infrastructure and facilities that improve our quality of life.***
- a. **Public-Private Partnerships** - Pittsburgh's innovative public-private partnership, supported by a unusual concentration of philanthropic resources, have led the way in the development of air emissions control technologies, clean water systems, community improvement, outdoor recreation, and urban redevelopment.
 - b. **Arts and Culture** - Downtown Pittsburgh's Cultural District, once a blighted section of the city stands as a unique international model of urban revitalization. Redevelopment of the Cultural District beginning with Heinz Hall in 1971 has spurred other development downtown and along the riverfronts.
 - c. **Going Green** - Pittsburgh is home to more than 30 LEED® -certified green buildings, including the first green college residence hall and Phipps Conservatory and Botanical Gardens. The David L. Lawrence Convention Center is the world's first and largest gold LEED®-certification convention center.

Pittsburgh has created a diverse, balance and resilient economy driven by a people who have imagined a bright future—and worked together to make it happen. Lawrence County applaud s Pittsburgh for a job well done!

New EPA Greenhouse Gas Emissions Regulations Workshop

ARE YOU READY

Here are the facts...

1. Green Gas Emissions data must be reported to the EPA by March 31, 2011
2. A plan **MUST** be in place by January 1, 2010
3. Rules apply to your business:
 - It falls into a selected source category
 - It emits 25,000 metric tons of CO₂ (i.e., uses ~450 million CF of natural gas or ~2.4



Presented by:
MACTEC Engineering
800 N. Bell Ave.
Pittsburgh, PA 15106
412-279-6661
www.mactec.com

Date : Tuesday, November 3, 2009

Time: 12:00 P.M.

Location: LCEDC Boardroom

100 E. Reynolds St.

New Castle, PA 16101

Cost: Non-Members - \$15.00

*Members - reduced based on
membership level*

Reservations:

Christine Vanasco

724-658-1488

vanasco@lawrencecounty.com

Speakers

Rick DeCeaser

&

Chris Dunay



Growth Partnership to meet on Friday, November 6, 2009

The Lawrence County Growth Partnership’s members will be meeting on Friday, November 6th at the Jameson South Conference Center to supply their view of the ‘market’ for Lawrence County. As part of the Comprehensive Plan Update and Economic Development Strategy, GSP Consulting will be conducting a lunchtime meeting to learn what business, government, and non-profit leaders believe are the strengths, weaknesses, opportunities and threats of the Lawrence County market. All members of the Growth Partnership are encouraged to attend. Your opinion and guidance is needed to make this program a success. For further information please contact either Linda Nitch at 724-658-1488 or Amy McKinney at 724-656-2193

**L
C
E
D
C**

**Corporate Office
Condominium
For Sale or Lease**

This 2,100 square foot suite of offices is located at:

**Plaza South
100 East Reynolds St.
New Castle, PA 16101**



Amenities include: Spacious conference room, 5 offices, two kitchen areas, and a large file room. Ample parking. For more information contact Linda D. Nitch at 724-658-1488 or nitch@lawrencecounty.com

The complex block has a green background. On the left, the letters "LCEDC" are arranged vertically in a large, decorative, serif font. To the right of these letters is the text for the office space. Further right is a photograph of a modern, single-story brick building with a green metal roof and a sign that reads "LAWRENCE COUNTY". To the right of the photo is a list of amenities and contact information.

Millennium Technology Park



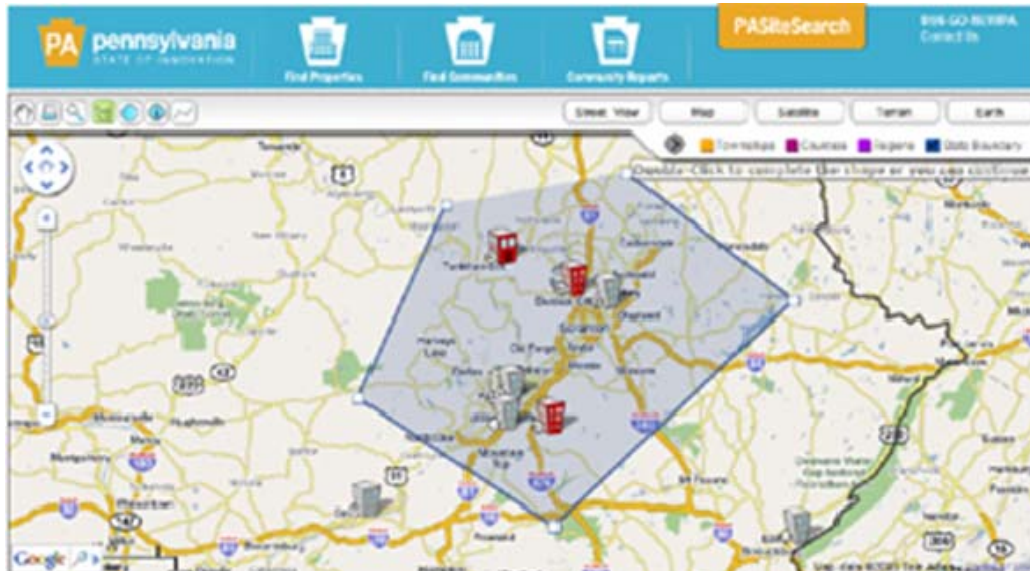
Building PA Fund available to finance projects in New Castle & Ellwood City

If you are a developer or business owner eager to reuse a building along East Washington Street in New Castle or Lawrence Avenue in Ellwood City, then the Building PA Fund may help you realize your dream! Commercial projects that provide goods or services to individuals or businesses along these two corridors may qualify for this funding. Building PA Funds are designed to provide gap-funding to revitalize the central business district. Funds can be loaned to private investors/developers and are matched at least dollar-for-dollar by private equity. In Lawrence County, the LCEDC has \$1.4 million currently available to lend. For further information or to apply, contact Linda Nitch, nitch@lawrencecounty.com, or Lynn Richardson at richardson@lawrencecounty.com or call 724-658-1488.

Lawrence County Sites and Facilities needed

In today's digital world, it is a necessity for Lawrence County's available sites and facilities to be listed on the LCEDC's database in order to get noticed! Site selectors, brokers, and business people planning to expand or relocate begin their search — almost exclusively — through web sites. As the county's lead economic development agency, the LCEDC is responsible for populating its web site's database with sites and facilities to retain and attract businesses that generate wealth for the community.

In the next 45 days the State of Pennsylvania will be uploading our current database to the improved PA Site Search commercial property database for Pennsylvania which contains a new GIS mapping system.



If you are the owner or broker of commercial/industrial buildings or land, please call our office at 724-658-1488 today to learn how to list your site/facility on this 'free' database!

2009 Lawrence County Economic Development Corporation Members

Lawrence County Commissioners: Steve Craig, Rick DeBlasio and Dan Vogler

Benefactor \$5000 -	Jaworski	Rizzo	Lee Michael Industries, Brian Herr
ESB Bank, Todd Palkovich	GEM Building Contractors, Geoffrey Measel	RFK Enterprises, Robert Koslow	New Castle YMCA, Bill Lutz
First Energy, Bart Spagnola	IPEC, Jay Martin	Slippery Rock University, Robert Smith	R G Steel Corp., Pete Crusci
Huntington Bank, Connie Bobby	Kasgro Rail, Joe Crawford	Treloar and Heisel, Scott Fehrs	Rashid Oriental Rugs, Jerry Rashid
First Commonwealth, Cindy Barber	New Era Realty, Frank Moses	West Central Job Partnership, Sam Giannetti	Reed Oil, Robert Preston
	Richardson Cooling Packages, Dave Richardson		Steel Valley Authority, Bob Value
Patron \$2500-\$4900	Steelite International, John Miles	Supporter \$200—\$399	Tanner Industries, Mark Tanner
Jameson Health, Doug Danko	Westminster College, Richard Dorman	Anderson Bro. Tools, Bill Anderson	United Way, Gayle Young
First National Bank, Chuck Dugan		Career Advantage, Kim Gabriel	Volant CDC, John Geidner
	Leader \$400—\$799	Castle Realty, Anthony Staph	Friend \$100—\$199
Sponsor \$1600—\$2499	Catalyst Connection, Petra Mitchell	City of New Castle, Anthony Mastrangelo	Comark & Assoc. Arnold Morris
Bruce and Merrilees, Bob Bruce	Diane Coury Design Association, Diane Coury-Jacobs	Cornerstone Construction, Rick Burkett	Mansell & Andrews, Charles Mansell
INMETCO, Bernie Frank	Giordano Construction, Joe Giordano	Faddis Concrete, Don Cooper	J. Fred Rentz
Medure Development, Rocky Medure	Grafton Construction, Harry Grafton	Faro Enterprises, Kathy Lima	Lester Hauschild
Partner \$800- \$1599	New Castle School of Trades, Jim Buttermore	Favorite Office, Rocco Favorite	Standing Members: Tom Stachura, Ellwood Chamber of Commerce, Bob McCracken, Lawrence County Chamber of Commerce, JoAnn McBride, Law County Tourism, Jim Gagliano, Lawrence County Business Administrator
Advanced Waste, Anthony Cialella	New Castle Industrial Railroad, Dale Berkley	First National Ins., Dan Pontius	
Berner International, Georgia Berner	Packer Thomas, Nick Paolini	Haney's, Sid Shenkan	
Butler Co. Community College, Bill O'Brien	Paul Lynch Foundation, Paul Lynch	Sam Biasucci	
Castle Builder Supply, Jim Carna	RAR Engineering, Ron	Robert Del Signore, Sr.	
First Merit Bank, Lynda		Law. Co. Social Services, Tom Scott	

Our many THANKS to the 2009 Members and your continued support in 2010 !

WPASGL TRAINING SEMINAR

Mark your calendars for Friday,
November 6, 2009

Learn how to take advantage of the NEW SBA rules to sell more **OWNER-OCCUPIED** real estate and make more money in these difficult economic times.

This interactive seminar sponsored by the Western Pennsylvania Association of SBA-Guaranteed Lenders (WPASGL) will show you how to:

- Qualify your prospects
- Offer up to 90% financing
- Offer terms up to 25 years (Lower down payments and longer terms mean more buyers qualify)
- Offer no re-sets or balloons
- Offer reduced or no fees
- Avoid common pitfalls
- Recent rates as low as 5.14%, fixed for 20 years!
- MAKE MORE \$\$\$\$\$\$\$

Our panel of experienced SBA 7a and 504 lenders will be there to answer all your questions. Don't miss this chance to learn about these programs and network with other real estate and lending professionals.

WPASGL TRAINING SEMINAR DETAILS

WHEN: Friday, November 6, 2009
Registration/Breakfast: 8:30am - 9:00am
Training Session: 9:00am - 12:00pm

WHERE: Hampton Inn & Suites, 4 Holiday Blvd, Mercer, PA 16137

COST: \$25.00 - includes breakfast and materials

Get a head start on your holiday shopping!

The Hampton Inn & Suites is conveniently located across the street from the Grove City Prime Outlets which has been rated one of the "Top 20 Outlet Malls in the US". The Prime Outlets at Grove City is home to 140 brand name outlet stores.

Please RSVP by
October 29th

Rebecca L. MacBlane
RDFC
3856 South Water Street
Pittsburgh, PA 15203
412.471.1030 phone
412.471.3902 fax
rmacblane@rdfc.net



Funding support and resources are provided by the Commonwealth of Pennsylvania through the Department of Community and Economic Development, through a cooperative agreement with the U. S. Small Business Administration, and through support from Gannon University. All services are extended to the public on a non-discriminatory basis. Special arrangements for persons with disabilities can be made by calling the Small Business Development Center at 814-871-7232. All opinions, conclusions or recommendations expressed are those of the author(s) and do not necessarily reflect the views of the SBA. Gannon University subscribes to a policy of equal opportunity and does not discriminate against any individual on the basis of race, color, national origin, religion, sex, age, veteran status, or disability in any of their programs, activities, admission, or employment decisions. All programs and services are provided on a non-discriminatory basis.

Funding for this newsletter is made possible by a generous grant from the
Lawrence County Commissioners:

Lawrence County Economic Development Corporation

Plaza South, Suite 100/100 East Reynolds Street

New Castle, PA 16101

724-658-1488

www.lawrencecounty.com

Linda Nitch, Executive Director (nitch@lawrencecounty.com)

Diane Lynn Richardson, Assistant Director (richardson@lawrencecounty.com)